

Client _____ Quantity _____
 Project _____ Position _____

Master GN counter 1 door +3 drawers

Model: TP13/1MR-760 Cod: T10411030202



Technical data

Top:	With top
Gross capacity:	303 lt
Temperature range:	-2°+8°C
Refrigerant unit:	remote
Cooling gas:	CO2
Defrost:	Electric
Body height:	760 mm
Valve:	Supplied standard with solenoid
Dimensions (mm):	1090×700×900 mm
Packing dimensions:	1395×800×998 mm
Gross weight:	111 Kg
Voltage:	220-240 V - 50-60 Hz
Total rate:	810 W
Absorbed Current:	3,7 A
Cooling capacity:	519 W*
*:	Evap. -10°C Cond. +55°C

Features

Standard equipment:	2 slides, 2 plastic coated GN1/1 shelves
Control:	Electronic, display flush with the panel
Doors:	2 doors, self-closing, reversible with 105° stop
Door gasket:	Magnetic, triple chamber and easily replaceable
Insulation:	60 mm thickness - CFC/HCFC free
Exterior/interior finishing:	Exterior interior and back in AISI 304 stainless steel. Base in colaminated steel.
Inner corners:	Rounded for easy cleaning and ensuring maximum hygiene
Handle:	Stainless steel AISI 304, 2 mm thick
Racks and slides:	Stainless steel AISI 304
Feets:	AISI 304 stainless steel adjustable h 100/150 mm
Cosmo:	Predisposed for Cosmo Hub connection

Remote unit technical data

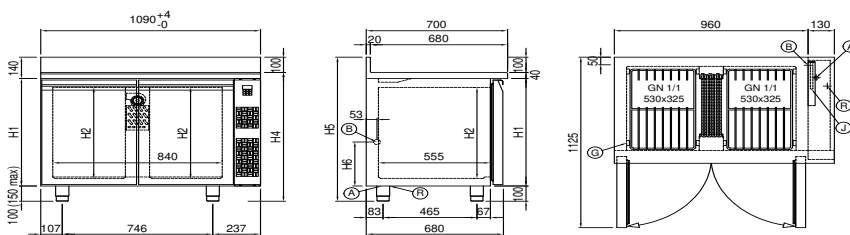
Voltage:	220-240 V - 50 Hz
Cooling gas:	R452A
Gross weight:	17 Kg
Dimensions (mm):	450×300×270 mm
Packing dimensions:	470×330×300 mm
Cooling capacity:	Evap. -10°C Cond. +55°C

Accessories and variants

Drawers 1/2	Other special voltage
Drawers 1/3	Internal hygiene H3
Drawers 1/3 + 2/3	Granite flat worktop
Special counter body heights 650 mm	Granite worktop with splashback
Special counter body heights 700 mm	Remote condensing unit EMT6165GK
Special counter body heights 750 mm	Adjustable feet h 145/195 mm
Technical compartment on the left	4 Swivel and brake castors h 128 mm
Common technical compartment	Brackets for GN pans for drawer
Counters without a technical compartment	GN1/2 container + lids kit for drawer, h 150 mm
Lock with key for drawer 1/2	GN1/3 container + lids kit for drawer, h 150 mm
Lock with key for drawer 1/3	Bottles shelf, stainless steel coating for shelf 350
Lock with key for drawer 1/3 + 2/3	Stainless steel shelf GN1/1
Glass door	Plastic coated shelf GN1/1
LED lighting	Pair of type C slides 505 mm
RAL customisable colouring	Serial interface, RS485 cable
Stainless steel evaporator	Cosmo connection kit
Predisposition for connection to CO2 remote control unit	Removable plinth GN 2DR h 50 mm
Power supply frequency 60Hz	Removable plinth GN 2DR h 100 mm

*The installation requires a kit for the replacement of the racks

Technical draw

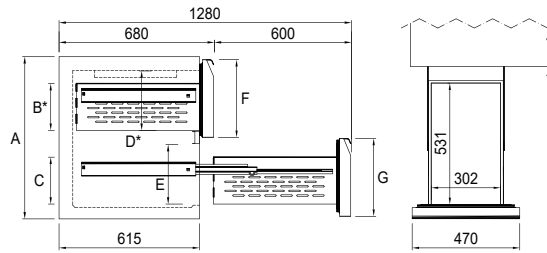


- A:** Power supply cable outlet **B:** Condensation water drain **G:** Racks pitch
J: Automatic evaporation of condensing water **R:** Gas output pipes

In order to constantly offer the best possible products we reserve the right to make changes on technical specifications without incurring any obligation for equipment previously or subsequently sold.



Refrigerated drawers 1/2
for -2°+8°C and -15°-22°C counters

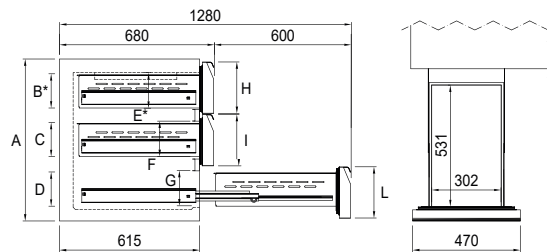


	650 - 660	700 - 710	750 - 760
A	650 - 660	700 - 710	750 - 760
B	180	205	205
C	205	205	205
D	230	260	270
E	235	260	285
F	315	340	365
G	315	340	365

* The drawer below the air conveyor has a reduced volume

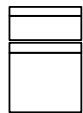


Refrigerated drawers 1/3
for -2°+8°C and -15°-22°C counters

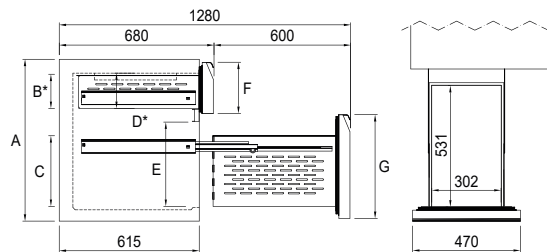


	650 - 660	700 - 710	750 - 760
A	650 - 660	700 - 710	750 - 760
B	95	150	150
C	150	150	150
D	95	150	150
E	155	155	160
F	155	155	180
G	105	155	170
H	225	225	240
I	225	225	240
L	175	225	240

* The drawer below the air conveyor has a reduced volume

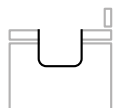


Refrigerated drawers 1/3 + 2/3
for -2°+8°C and -15°-22°C counters



	650 - 660	700 - 710	750 - 760
A	650 - 660	700 - 710	750 - 760
B	95	150	150
C	260	310	310
D	155	155	160
E	320	370	395
F	225	225	240
G	405	455	490

* The drawer below the air conveyor has a reduced volume



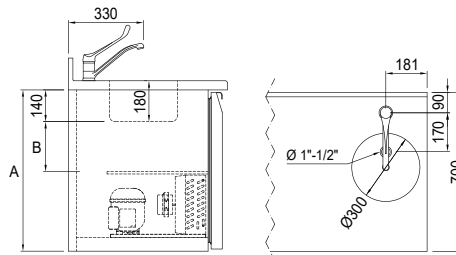
Service water sink Ø 300 mm*

Cod: O922100020
€ 782,00



Single lever mixer hole Ø 3/4

Cod: O922200020



	650	660	700	710	750	760
A	650	660	700	710	750	760
B	165	170	215	220	265	270

* Siphon not supplied, water inlet-outlet hole to be provided by the installer.

* Available for versions 2, 3, 4 doors plug-in.