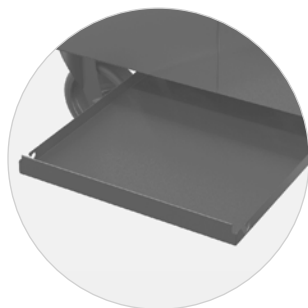


Model:	VTLW2
Working temperature (inside the cupboard):	+30 ... +85 °C
Input:	8,7 A
Power:	2000 W
Voltage/frequencies:	230-240 V / 50 Hz
Operating type:	Ventilated heat



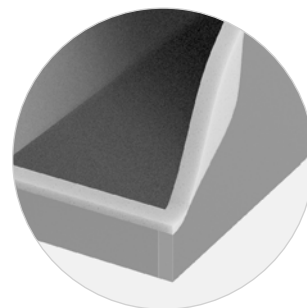
Designed for plates  
(Ø 160 - 280 mm)



Waste tray



Self adjustable to weight of the plates



Double-wall construction with thermal insulation